

## Thermostatic head (VAZ)

### Intended use of device

The head is designed for mounting on the thermostatic valve of the radiator, directly or through an adapter.

### Technical information

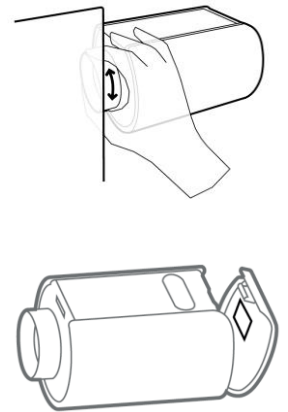
Model markings	VAZ
Power supply	3.0 V (2xAAA)
Safety class	Class III
Threaded nut	M30 x 1,5

**Wi-Fi 2,4 GHz 802.11 b/g/n**

### Activating the VAZ head

1. Install the SMART application on your mobile device, grant the appropriate approvals related to the location and operation of the scanner.
2. Create a user account and provide basic details of the newly created "house".
3. Prepare a password for the local Wi-Fi network.
4. Install the head on the valve and start *PAIRING*:
  - a. Start the new device by a short press on either of the + or – buttons on the panel → *all LED strips will flash three times and the +/- buttons will flash steadily, the device will go into PAIRING MODE for 5 minutes.*
  - b. If the pairing mode does not start automatically or if the device is restarted, press both buttons +/- and hold them for approx. 15 seconds (the entire display flashes every 5 seconds, after the third flash, release the buttons → *all LED strips will flash 3 times and the +/- buttons will start flashing steadily, the device will go into PAIRING MODE for 5 minutes.*

**NOTE: from now on, the device broadcasts its network address (signal) and is seen by the SMART application.**



- c. Launch the SMART application and go to the *Devices* screen.
- d. Select the "+" button and follow the instructions in the application (first scan the code from the sticker on the device or enter it manually, select the local Wi-Fi network and enter the router password, then from the list of available devices, select the device currently being added, and finally select the correct wi-fi network again).
- e. When the automatic part of the process is over, select the appropriate zone in the application (or create a new one) and enter the device name.

### Additional comments on adding devices to the Terma SMART system

- Adding devices is possible only via the mobile application.
- System changes are sent locally by the router, and to the cloud service by the application.
- In some Android system overlays, during pairing, the phone tries to automatically switch to the remembered Wi-Fi network with Internet access - you must manually confirm the connection with the device's network.
- After adding the heating devices to the system, they are turned off by default (they do not heat up, despite the low ambient temperature, the interface bars are not lit, and the remote communication interval is 1h).
- Add heating devices first, sensors last.
- There can be only one temperature and humidity sensor (VTS) in one heating zone.
- The option of "*combine into a set*" is available only for the heating element and the thermostatic head installed in the same central heating radiator, and only during the installation of the second device.
- The name of each device must be unique within the system.
- The name of the zone must be unique within the system.

A more detailed description of the SMART System can be found on [www.termasmart.com](http://www.termasmart.com)



#### Treatment of waste electrical and electronic equipment:

Pursuant to the regulations in force on used electric and electronic equipment, products marked with the symbol of separate collection cannot be placed with other municipal waste. Due to the content of harmful substances, electronic products not subjected to the selective sorting process may be dangerous to the natural environment and human health.

Proper separate collection of used electrical and electronic equipment prevents negative impacts on the environment.

#### INFORMATION CONCERNING THE WASTE COLLECTION SYSTEM FOR ELECTRICAL AND ELECTRONIC EQUIPMENT:

- A distributor accepts and collects electrical and electronic equipment waste from households free of charge, provided that the equipment is of the same type and performs the same functions as the equipment purchased,
- a collecting operator have the right to refuse to accept the waste equipment if it poses a threat to the health or life of individuals receiving the equipment due to contamination,
- the user of equipment intended for households may hand over the used equipment to: a distributor, a waste processing plant, collecting municipal waste in the commune.

Further information can be found on the government website: [www.hse.gov.uk/waste/waste-electrical.htm](http://www.hse.gov.uk/waste/waste-electrical.htm)