

Angled integrated thermostatic valve with immersion tube set

Available versions:



Left

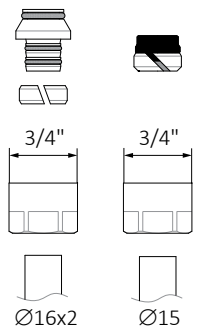
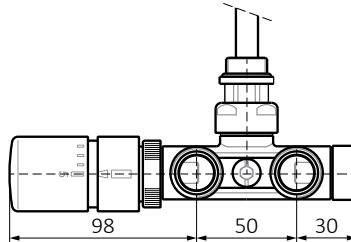
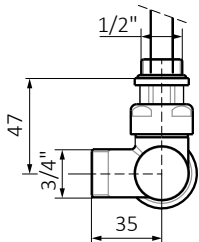


Right

The left or right-hand version determines the position of the thermostatic insert or manual valve with male thread.

Colour Options: ●●●●

Connections

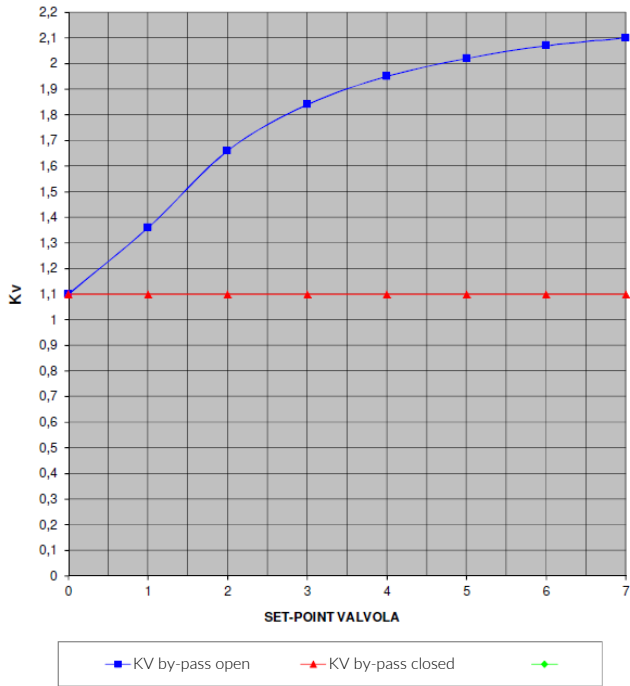


Adapter
for ALU-PEX
installation

Adapter
for copper
installation

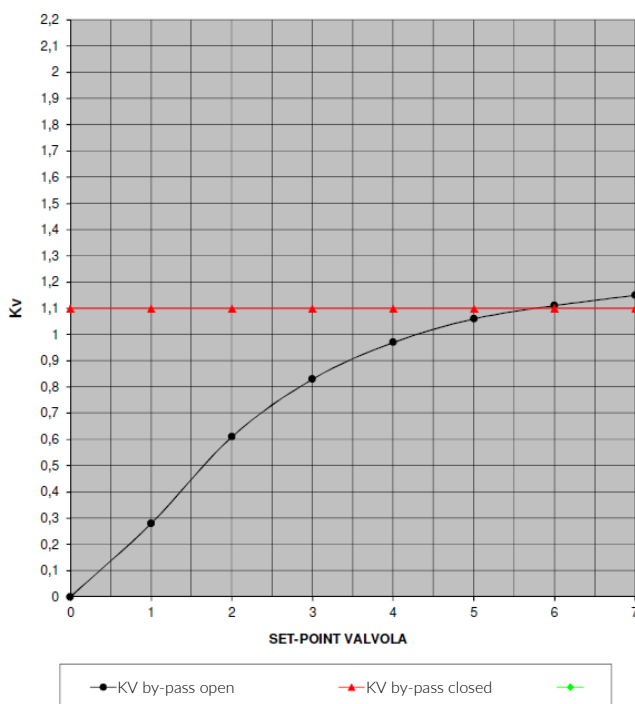
Position	Size	Colour	Product code
Left	GZ 1/2" - Ø16x2, Ø15	Chrome	WRZT5G5-CR
Right	GZ 1/2" - Ø16x2, Ø15	Chrome	WRZT5G6-CR
Left	GZ 1/2" - Ø16x2, Ø15	Satin	WRZT5G5-ST
Right	GZ 1/2" - Ø16x2, Ø15	Satin	WRZT5G6-ST
Left	GZ 1/2" - Ø16x2, Ø15	Black matt	WRZT5G8-CM
Right	GZ 1/2" - Ø16x2, Ø15	Black matt	WRZT5G9-CM
Left	GZ 1/2" - Ø16x2, Ø15	Black gloss	WRZT5G8-CZ
Right	GZ 1/2" - Ø16x2, Ø15	Black gloss	WRZT5G9-CZ

Angled integrated thermostatic valve with immersion tube set



MONOTUBE

N°Giri	0	1	2	3	4	5	6	7
KV by-pass open	1,1	1,36	1,66	1,84	1,95	2,02	2,07	2,10
KV by-pass closed	1,1	1,1	1,1	1,1	1,1	1,1	1,1	1,1



BITUBE

N°Giri	0	1	2	3	4	5	6	7
KV by-pass open	0	0,28	0,61	0,83	0,97	1,06	1,11	1,15
KV by-pass closed	1,1	1,1	1,1	1,1	1,1	1,1	1,1	1,1