

# USER'S MANUAL

Integrated thermostatic valve set  
with immersion tube

# UNICO ALL IN ONE

# UNICO ALL IN ONE – INTEGRATED THERMOSTATIC VALVE SET

## The set contains:

- Integrated thermostatic valve with immersion tube
- Thermostatic head M30 × 1.5
- Pipe-masking set
- 2 × adapter PEX, ALU-PEX 16×2
- 2 × adapter CU Ø 15

**The valve should be installed in accordance with the specified direction of the heating medium supply and return.**

**A product of the Polish Vario Term brand. Available from stock in the following colours:**

- white (RAL 9016)
- soft white (SOFT 9016)
- black (RAL 9005)
- matte black (MAT 9005)
- chrome

On request, the set is available in all single-coating colours from the Terma palette, i.e. in all RAL colours and in most special colours, as well as in colours: Soft 9005, Soft 7047, Mat 7016

The set is not available in the RAL colours in SOFT and MAT finishes and in special colours: Black Crocodile New, White Gold.

The set is not available in the Premium palette colours (liquid paints)

### Available connections:



**Distributor:** Terma Sp. z o.o. | Czaple 100 | 80-298 Gdańsk | [termagroup.pl](http://termagroup.pl)

**Manufacturer:** Vario Term Sp. z o.o. | ul. Ogórkowa 96 | 04-998 Warsaw

# TECHNICAL DATA

<b>Operating temperature</b>	120°C
<b>Nominal pressure</b>	1MPa
<b>Heating medium</b>	water
<b>Test pressure</b>	1,5 MPa
<b>Valve pressure differential</b>	0,06 MPa
<b>Initial setting</b>	on lockshield valve insert
<b>Hysteresis</b>	0,3 °K

## Initial settings and corresponding Kv coefficients for the thermostatic insert

<b>Proportional deviation</b>	0,5K	0,75K	1K	2K	Kvs
<b>Kv</b>	0,12	0,27	0,36	0,52	0,85

## Initial settings and corresponding Kv coefficients for the lockshield valve

<b>Number of turns</b>	1/2	1	2	3	4	5
<b>Kv</b>	0,1	0,16	0,28	0,36	0,57	0,87

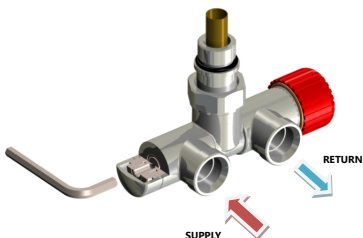
## Warning:

- Mount the thermostatic head on the return side (if the supply is on the right when looking at the radiator, the thermostatic head should be on its left side).
- UNICO connections are factory set in the open position.
- The initial setting in the UNICO connection is carried out by means of a lockshield valve insert. To change the initial setting, first the lockshield valve insert must be turned off (max. 3 Nm - slight tightening) and then, using a hex key, starting from the closed position of the valve insert, unscrew it counterclockwise by making the number of turns required to reach the desired Kv value. The initial setting on the return valve insert is a very convenient method of flow limitation and is recommended by the manufacturer.
- The connection has a radiator shut-off function for radiator maintenance, repair or replacement. However, these types of works must be carried out with the heating medium flow being shut off at the lockshield insert (by tightening the spindle of the lockshield insert using a hex key with a torque not exceeding 3 Nm) and at the thermostatic insert using a protective cap. The connection, however, must not be left unattended while the aforementioned work is carried out. If the work is to be carried out for more than one day, it is advisable to secure the radiator connectors with additional lockshield valves or plugs to avoid undesired effects, e.g. flooding.

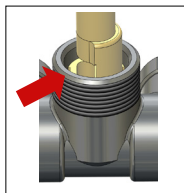
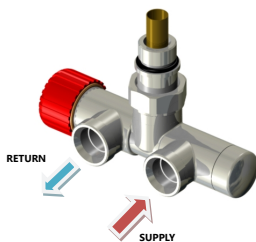
# CORRECT ASSEMBLY OF THE UNICO CONNECTION TO THE INSTALLATION

Assembly and setting details available at [www.varioterm.pl](http://www.varioterm.pl)

– **LEFT** version  
**Max. torque 3Nm** when tightening



– **RIGHT** version  
**Max. torque 3Nm** when tightening

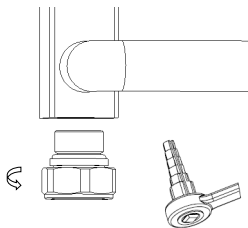


**WARNING!**  
The neck on the sleeve must be on the thermostatic head side

# DETAILED ASSEMBLY INSTRUCTIONS

Set catalogue number: UGS02..CFK/L - left | UGS02..CFK/P - right

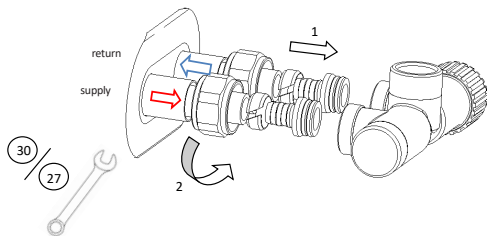
1



**Warning:**

Using a pipe union ratchet wrench, screw the coupling into the radiator manifold. When tightening, make sure not to damage the O-ring responsible for tightness between the radiator and the coupling.

## 2.a (PEX 16x2)

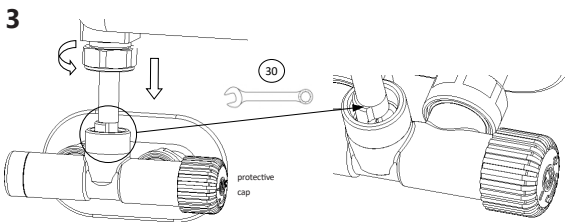


**Warning:**

**Supply on the lockshield insert side!!**

Before assembling the coupling, you can install a rosette and masking sleeves in the same colour as the connection (*additional accessories*).

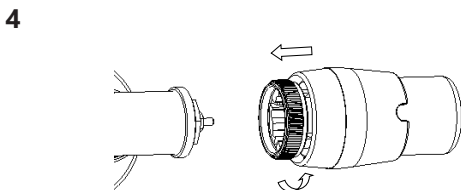
When mounting the 16x2 coupling, make sure not to damage the O-rings providing coupling tightness between the installation and the connection..



**Warning:**

The neck on the sleeve must be on the thermostatic head side.

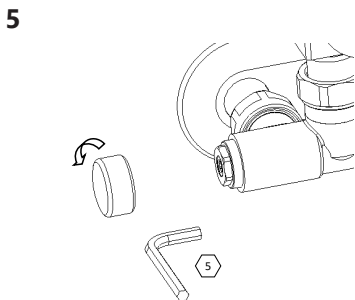
---



**Warning:**

Before assembling the head, unscrew the protective cap - point 3.

---

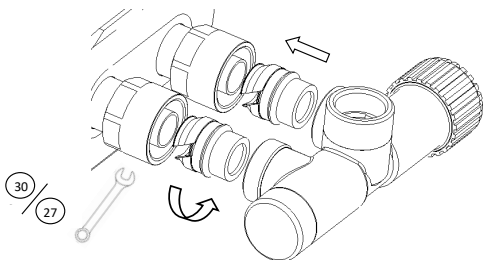


**Warning:**

Flow adjustment in accordance with the Product Data Sheet ([www.variotherm.pl](http://www.variotherm.pl))



## 2.b (Cu 15x1)



### **Warning:**

#### **Supply on the lockshield insert side!!**

Before assembling the coupling, you can install a rosette and masking sleeves in the same colour as the connection (additional accessories).

Remove any sharp material residue from the outside of the tube that may damage the O-rings inside the coupling when pushing it onto the tube. After tightening the coupling **with a torque of ~8 Nm**, first make sure that the tube cannot be rotated and/or removed by pulling it **STRONGLY**, and then proceed to check for any hydraulic leaks. Maintain a 90° angle between the tube and the radiator.

# WARRANTY TERMS

1. The manufacturer provides a warranty for a period of 3 years from the date of purchase.
2. Defects revealed during the warranty period will be removed free of charge within 14 business days from the date of their notification.
3. A defect or damage must be notified by email at **[reklamacje@varioterm.pl](mailto:reklamacje@varioterm.pl)** or by phone at (022) 8724214.
4. To perform a warranty repair, the defective product must be delivered to the VARIO TERM office with a description of the reason for the complaint and a copy of the proof of purchase with the stamp of the facility where the purchase was made and clearly marked with the date of purchase.
5. The warranty does not cover parts that are subject to natural wear and tear during the period of use, defects caused by
6. assembly and use inconsistent with the instructions, defects with traces of mechanical damage, thermal damage or traces of user manipulation.
7. The purchaser loses all rights under the warranty in the event of:
  - loss or destruction of the proof of purchase,
  - unauthorised repairs, disassembly,
  - use that is improper or inconsistent with the manual.