

◀ **Radiator**

Rolo Room E 1800↓ x 370↔ E8,
radiator colour: True Copper,
radiator code: WLROR180037 KTCGE8

Valves and accessories

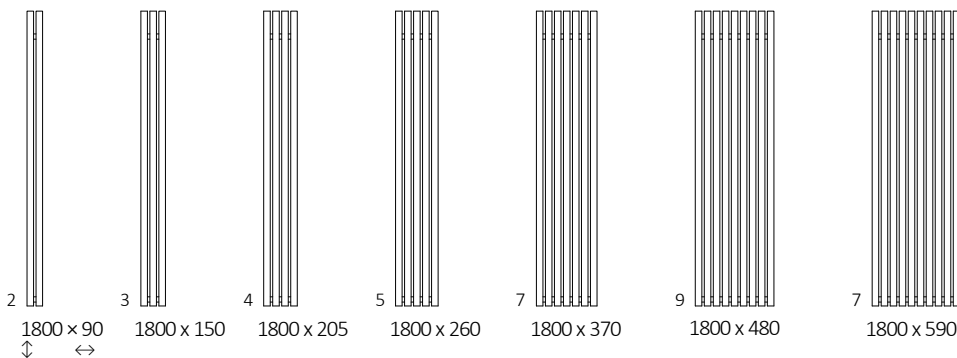
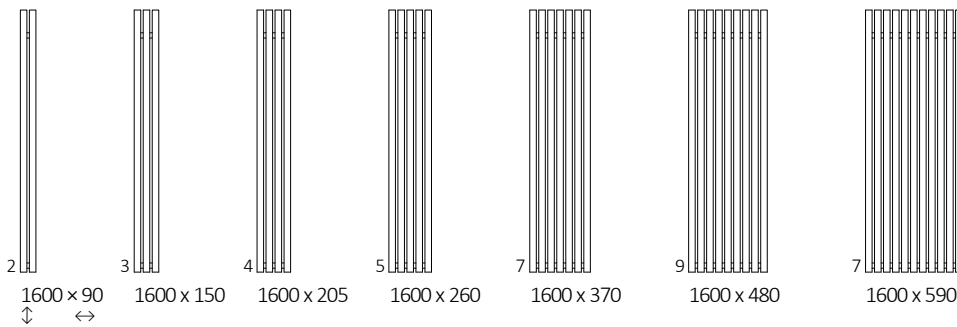
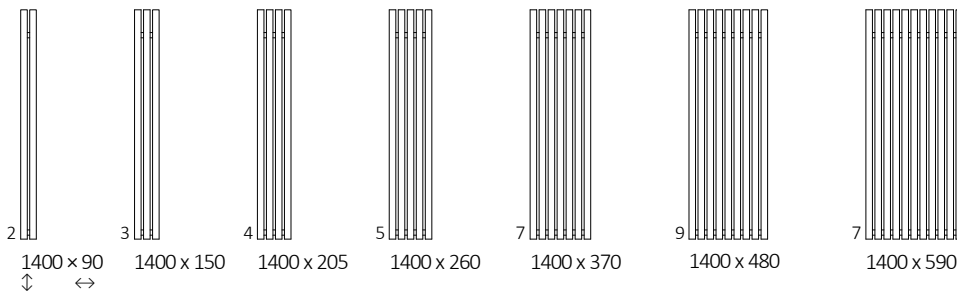
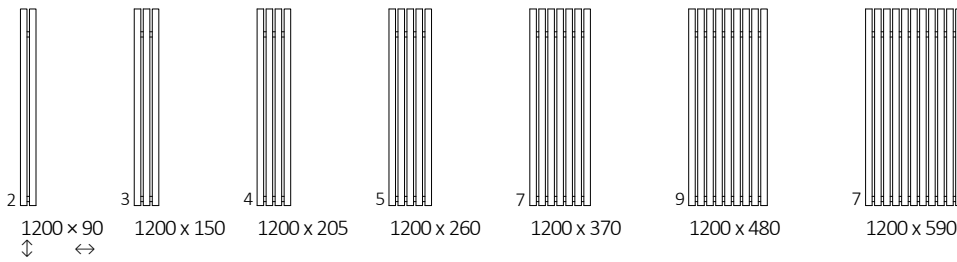
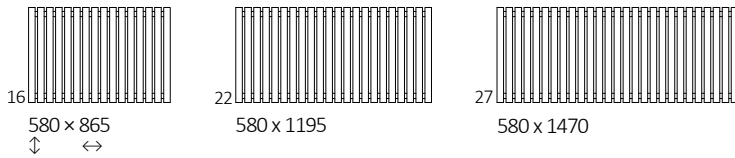
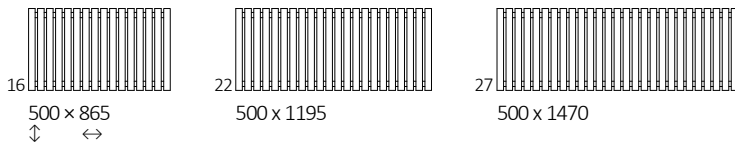
MOA BLUE, Chrome

ROLO ROOM E



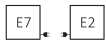


AVAILABLE SIZES





ELECTRIC RADIATOR



Connections

A \updownarrow 500 ÷ 580:A \updownarrow 1200 ÷ 1800:

Height A \updownarrow [mm]	Width B \leftrightarrow [mm]	Heating power [W]	Product code ... Configuration p. 10
500	865	600	WLROR050086
500	1195	800	WLROR050119
500	1470	1000	WLROR050147
580	865	800	WLROR058086
580	1195	1000	WLROR058119
580	1470	1200	WLROR058147
1200	95	200	WLROR120009
1200	150	300	WLROR120015
1200	205	300	WLROR120020
1200	260	400	WLROR120026
1200	370	600	WLROR120037
1200	480	800	WLROR120048
1200	590	800	WLROR120059
1800	95	300	WLROR180009
1800	150	400	WLROR180015
1800	205	600	WLROR180020
1800	260	600	WLROR180026
1800	370	800	WLROR180037
1800	480	1000	WLROR180048
1800	590	1200	WLROR180059

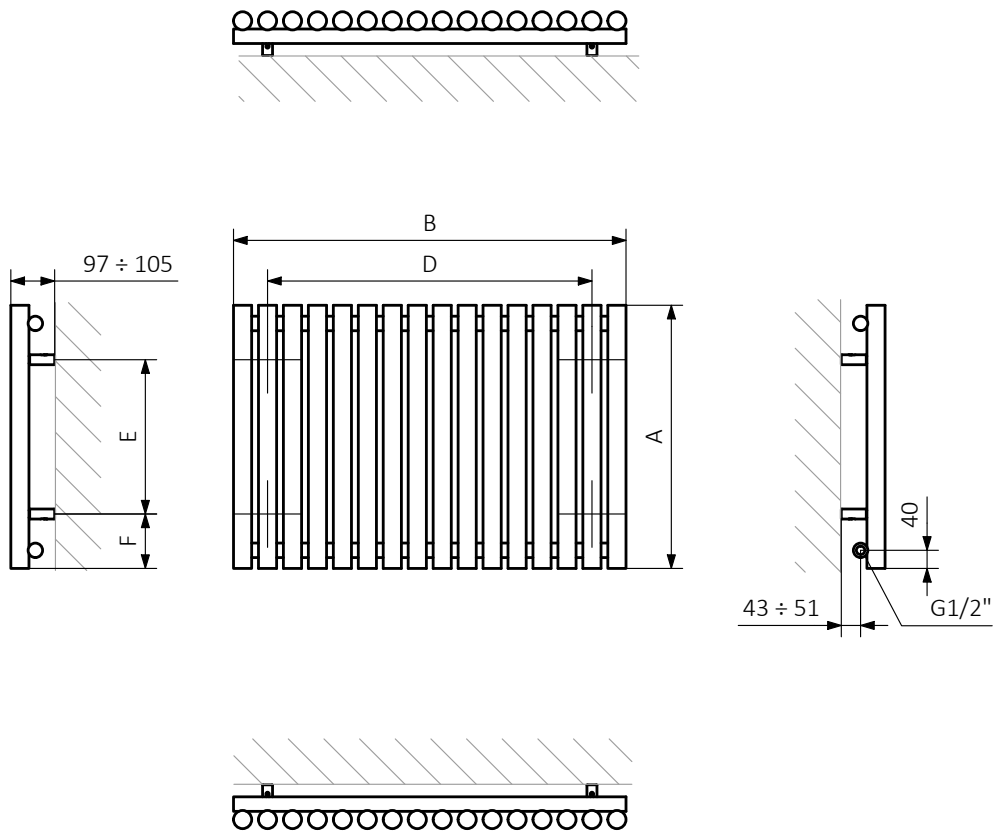
DIMENSIONS AND TECHNICAL INFORMATION

Height A \updownarrow [mm]	Width B \leftrightarrow [mm]	Spacing horizontal fasteners D [mm]	Spacing vertical fasteners E [mm]	Bottom fasteners position F [mm]	Capacity  [dm ³]	Weight  [kg]
500	865	715	260	120	9,79	21,90
500	1195	1 045	260	120	13,47	30,14
500	1470	1 320	260	120	16,54	37,01
580	865	715	340	120	11,17	24,92
580	1195	1 045	340	120	15,36	34,27
580	1470	1 320	340	120	18,86	42,07

Height A ↕ [mm]	Width B ↔ [mm]	Spacing horizontal fasteners D [mm]	Spacing vertical fasteners E [mm]	Bottom fasteners position F [mm]	Capacity  [dm ³]	Weight  [kg]
1200	95	55	960	120	2,71	6,19
1200	150	110	960	120	4,08	9,20
1200	205	165	960	120	5,44	12,22
1200	260	220	960	120	6,81	15,03
1200	370	330	960	120	9,54	21,06
1200	480	440	960	120	12,27	27,09
1200	590	550	960	120	15,00	33,12
1800	95	55	1 560	120	4,00	9,06
1800	150	110	1 560	120	6,01	13,53
1800	205	165	1 560	120	8,02	18,01
1800	260	220	1 560	120	10,03	22,06
1800	370	330	1 560	120	14,06	30,92
1800	480	440	1 560	120	18,08	39,76
1800	590	550	1 560	120	22,10	48,61

TECHNICAL DRAWING

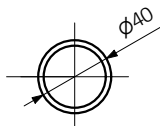
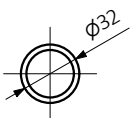
E2



A – Height B – Width D – Horizontal distance between mounting bracket centres E – Vertical distance between mounting brackets F – Distance between a mounting bracket and the bottom of the radiator

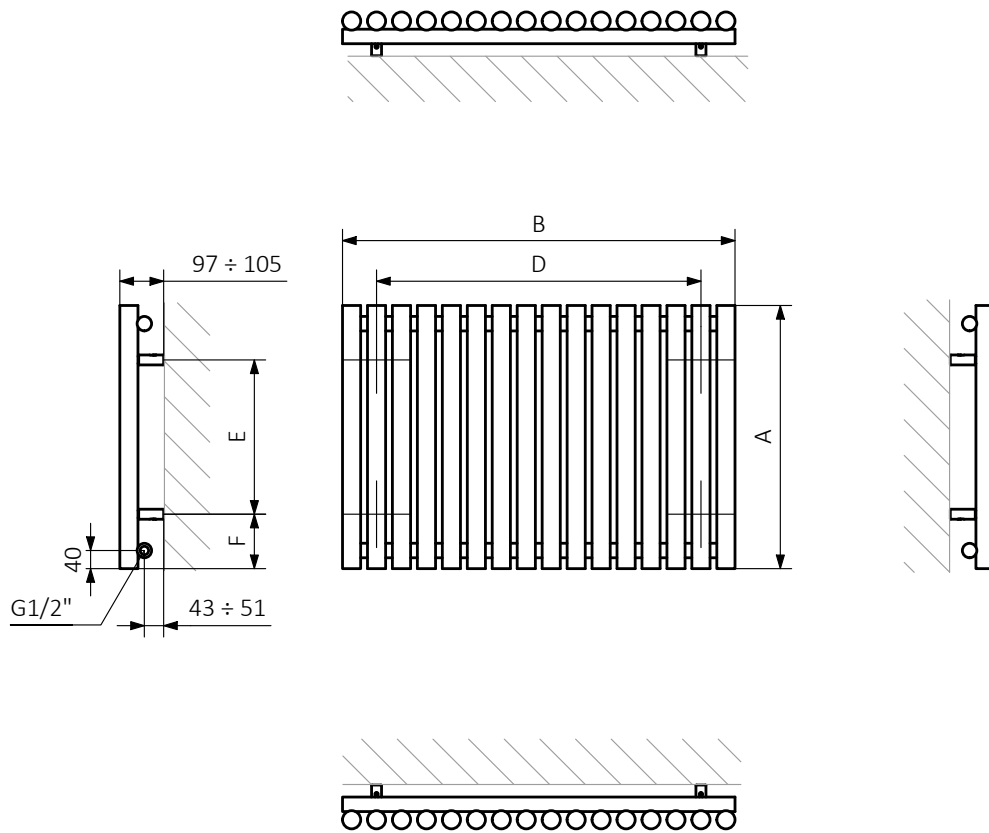
Collector:

Pipe:



TECHNICAL DRAWING

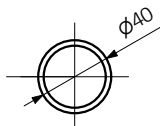
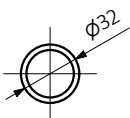
E7



A – Height B – Width D – Horizontal distance between mounting bracket centres E – Vertical distance between mounting brackets F – Distance between a mounting bracket and the bottom of the radiator

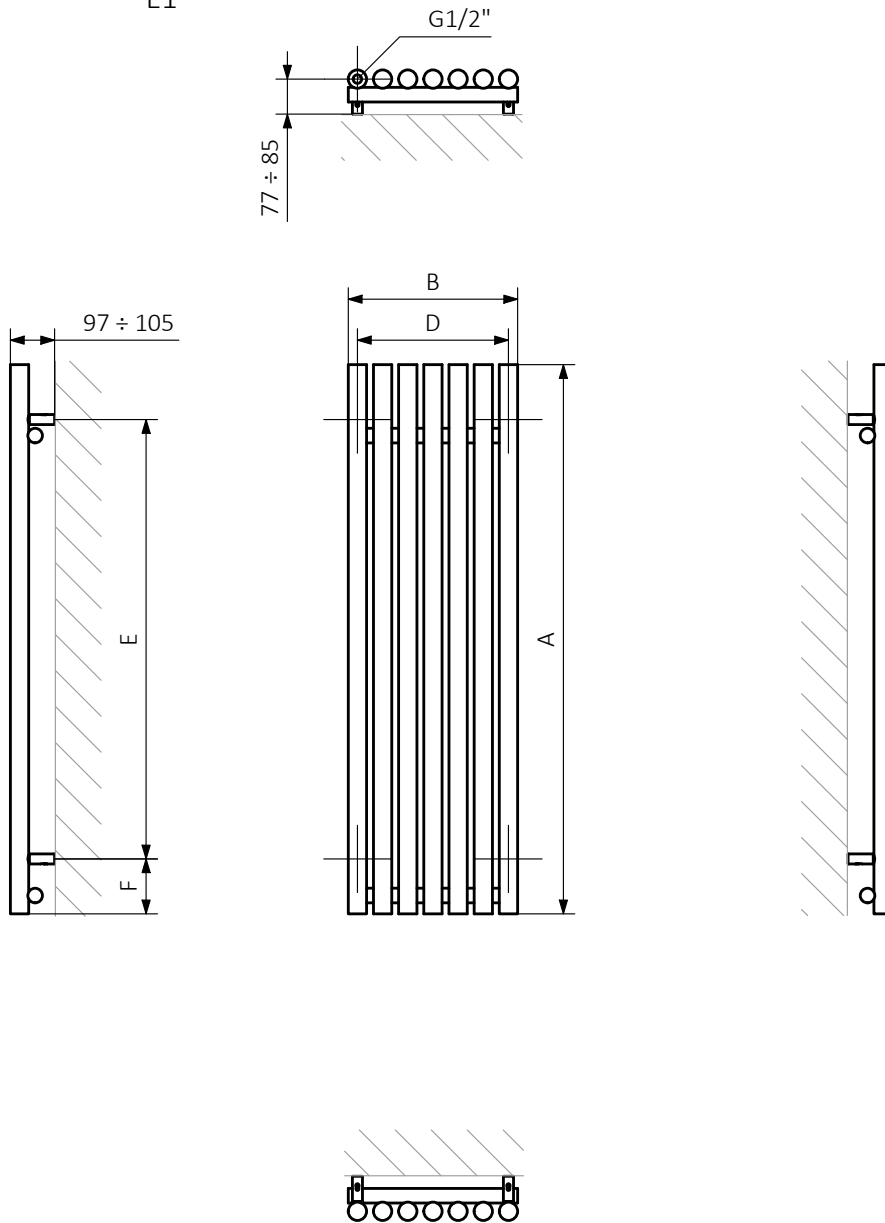
Collector:

Pipe:



TECHNICAL DRAWING

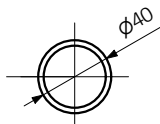
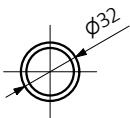
E1



A – Height B – Width D – Horizontal distance between mounting bracket centres E – Vertical distance between mounting brackets F – Distance between a mounting bracket and the bottom of the radiator

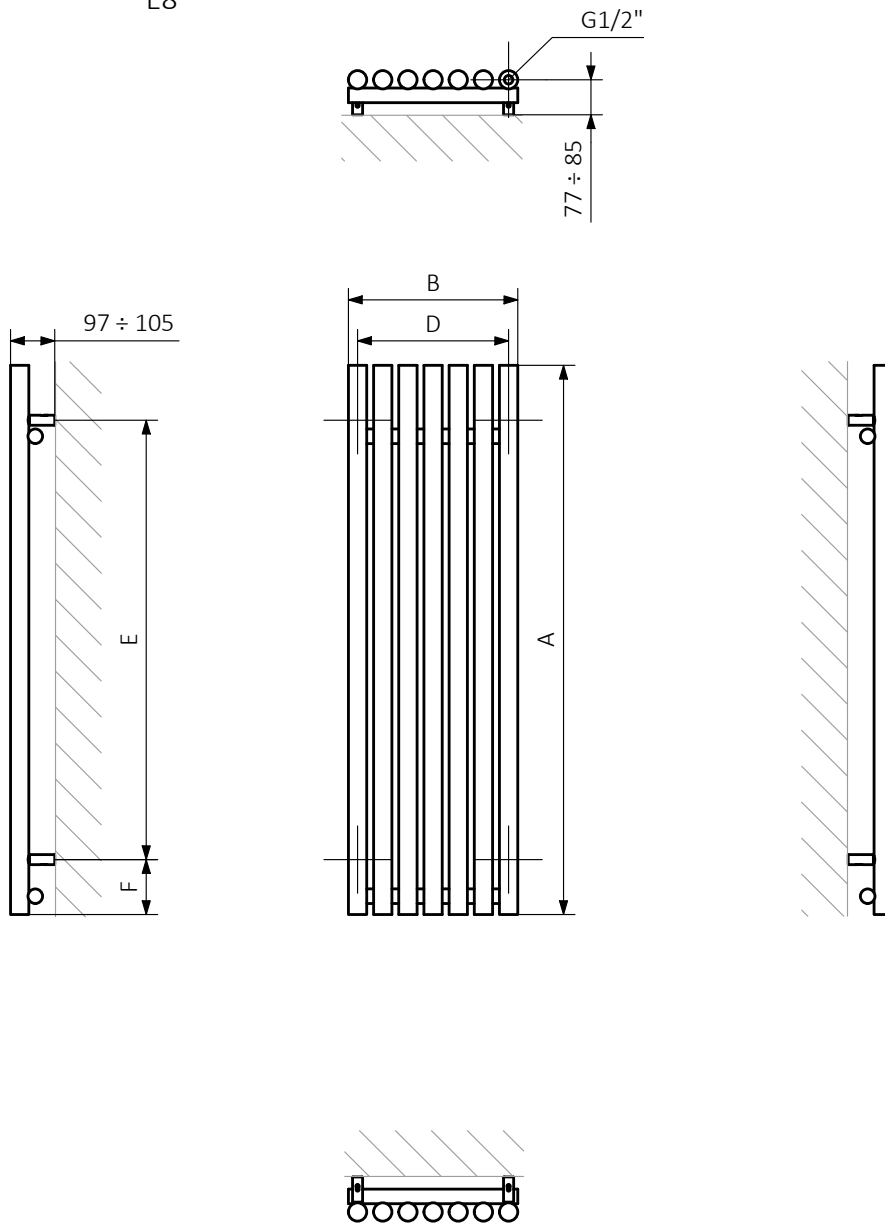
Collector:

Pipe:



TECHNICAL DRAWING

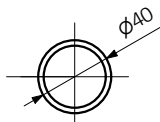
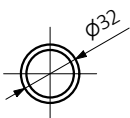
E8



A – Height B – Width D – Horizontal distance between mounting bracket centres E – Vertical distance between mounting brackets F – Distance between a mounting bracket and the bottom of the radiator

Collector:

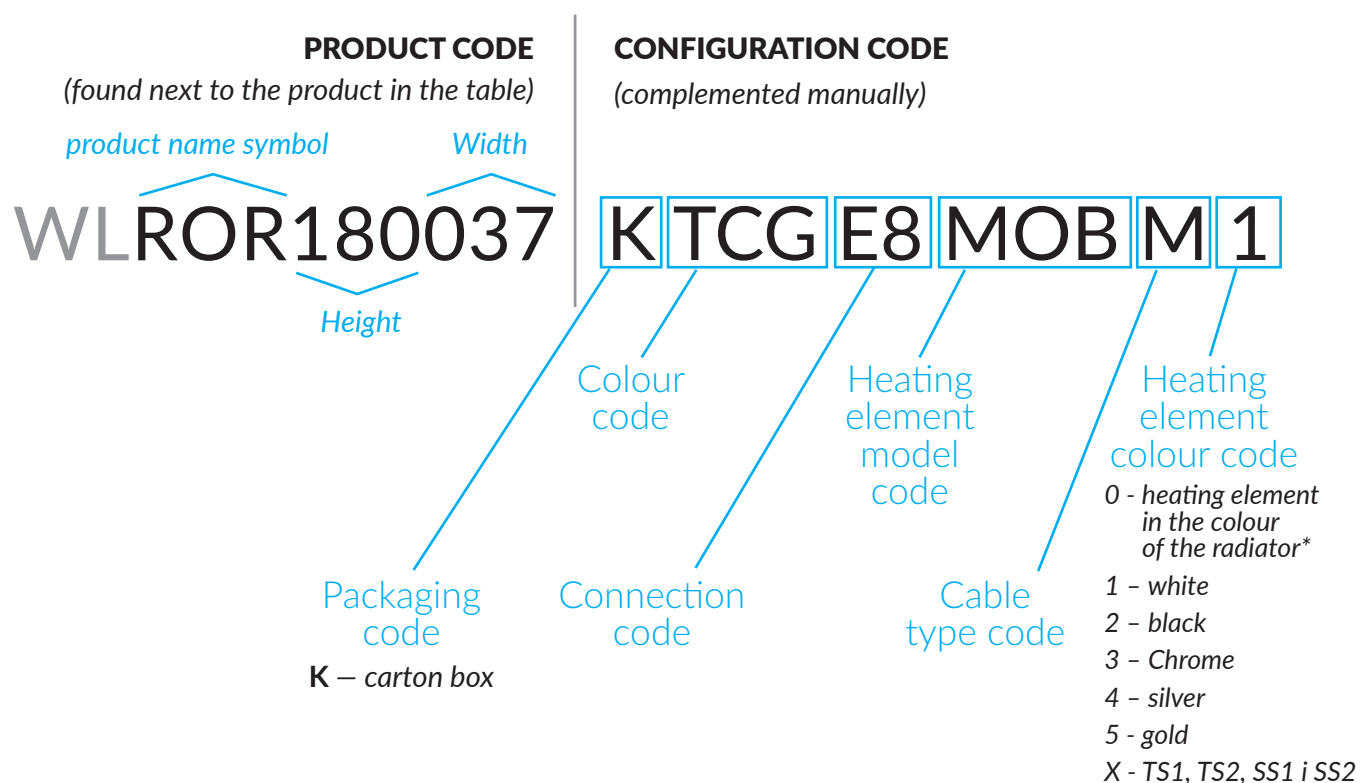
Pipe:



A CONFIGURATION CODE FOR AN ELECTRIC TOWEL RAIL OR RADIATOR FILLED WITH OIL AND FITTED WITH A HEATING ELEMENT (PRODUCT GROUP „WL”)

Product codes can be found in the product tables in both the catalogue and the price list. They provide basic information about the product, and the configuration code contains information that complements the specification. When placing an order, the product codes should contain the fully completed configuration part. Part of the configuration code should be placed after the main product code as shown in the example below:

CODE DETAILS:



WL – electric towel rail or radiator filled with oil and fitted with a factory installed heating element