

USER'S MANUAL

Integrated thermostatic valve set

INTEGRA ALL IN ONE

INTEGRA ALL IN ONE – INTEGRATED THERMOSTATIC VALVE SET

The set contains:

- 3-axis thermostatic valve with T-piece for heating element assembly
- 3-axis lockshield valve with T-piece for heating element assembly
- Thermostatic head M30 × 1.5
- Pipe-masking set
- 2 × adapter PEX, ALU-PEX 16×2
- 2 × adapter CU Ø 15

The valve should be installed in accordance with the specified direction of the heating medium supply and return.

A product of the Polish Vario Term brand. Available from stock in the following colours:

- white (RAL 9016)
- soft white (SOFT 9016)
- black (RAL 9005)
- matte black (MAT 9005)
- chrome

On request, the set is available in all single-coating colours from the Terma palette, i.e. in all RAL colours and in most special colours, as well as in colours: Soft 9005, Soft 7047, Mat 7016

The set is not available in the RAL colours in SOFT and MAT finishes and in special colours: Black Crocodile New, White Gold.

The set is not available in the Premium palette colours (liquid paints)

Available connections:

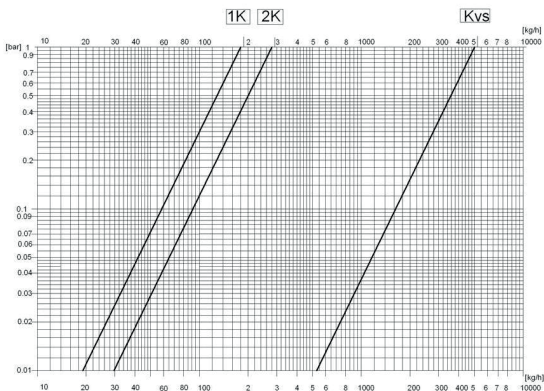


Distributor: Terma Sp. z o.o. | Czaple 100 | 80-298 Gdańsk | termagroup.pl
Manufacturer: Vario Term Sp. z o.o. | ul. Ogórkowa 96 | 04-998 Warsaw

TECHNICAL DATA

Operating temperature	120°C
Nominal pressure	1MPa
Heating medium	water
Max. pressure differential	0.06MPa
Test pressure	1.5 MPa
Head mounting thread	M30x1,5
Initial setting	on lockshield valve
Radiator connection	G 1/2
Heating element assembly	on lockshield valve (recommended)

INTEGRA valve flow diagram



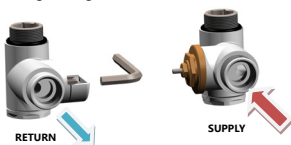
Valve opening degree	1K	2K	Kvs
Kv	0,18	0,27	0,50

CORRECT ASSEMBLY OF THE INTEGRA CONNECTION TO THE INSTALLATION

Assembly and setting details available at www.varioterm.pl

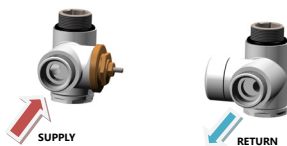
– **LEFT** version

Max. torque 3Nm when
tightening



– **RIGHT** version

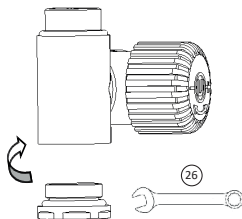
Max. torque 3Nm when
tightening



DETAILED ASSEMBLY INSTRUCTIONS

Set catalogue number: IGS02..CFK/L – left* | IGS02..CFK/P – right

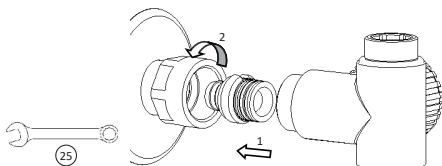
1



Warning:

Unscrew the blanking plug

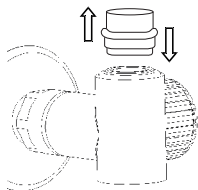
2.a (PEX 16x2)



Warning:

When mounting the 16x2 coupling, make sure not to damage the O-rings providing coupling tightness between the installation and the valve.

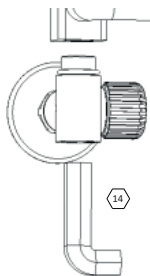
3



Warning:

Push the mounting screw manually into the centre of the valve body to adjust the distance of the valve from the radiator, keep the O-ring in place.

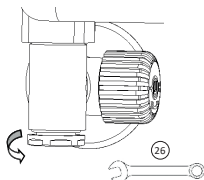
4



Warning:

Push in the hex key into the hexagonal hole inside the mounting coupling. Screw in all the way, minding the O-ring between the valve and the radiator.

5

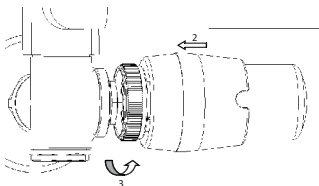


Warning:

Tighten the blanking plug.

Protective cap.

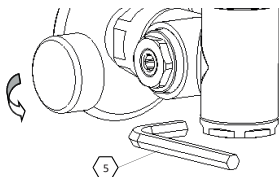
6



Warning:

Unscrew the protective cap before assembling the head.

7

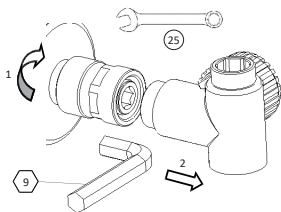


Warning:

Flow adjustment in accordance with the Product Data Sheet (www.variotherm.pl)

When assembling the heating element, replace the blanking plug with the one with a 1/2 internal thread supplied with the set.

2.b (RP 1/2)

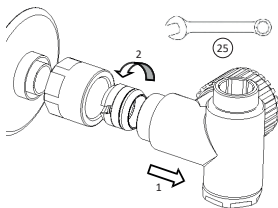


Warning:

1. Seal the threaded connection and then screw in the coupling with a hex key.

2. Insert the coupling into the valve body and tighten it with a 25 mm wrench.

2.c (Cu 15x1)



Warning:

Remove any sharp material residue from the outside of the 15x1 tube that may damage the rubber gasket of the coupling when pushing it into the tube. After tightening the coupling (with a torque in the range of 15-20 Nm), first make sure that the tube cannot be rotated and/or removed by pulling it **STRONGLY**, and then proceed to check for any hydraulic leaks.

Maintain a 90° angle between the tube and the radiator.

WARRANTY TERMS

1. The manufacturer provides a warranty for a period of 3 years from the date of purchase.
2. Defects revealed during the warranty period will be removed free of charge within 14 business days from the date of their notification.
3. A defect or damage must be notified by email at **reklamacje@varioterm.pl** or by phone at (022) 8724214.
4. To perform a warranty repair, the defective product must be delivered to the VARIO TERM office with a description of the reason for the complaint and a copy of the proof of purchase with the stamp of the facility where the purchase was made and clearly marked with the date of purchase.
5. The warranty does not cover parts that are subject to natural wear and tear during the period of use, defects caused by
6. assembly and use inconsistent with the instructions, defects with traces of mechanical damage, thermal damage or traces of user manipulation.
7. The purchaser loses all rights under the warranty in the event of:
 - loss or destruction of the proof of purchase,
 - unauthorised repairs, disassembly,
 - use that is improper or inconsistent with the manual.